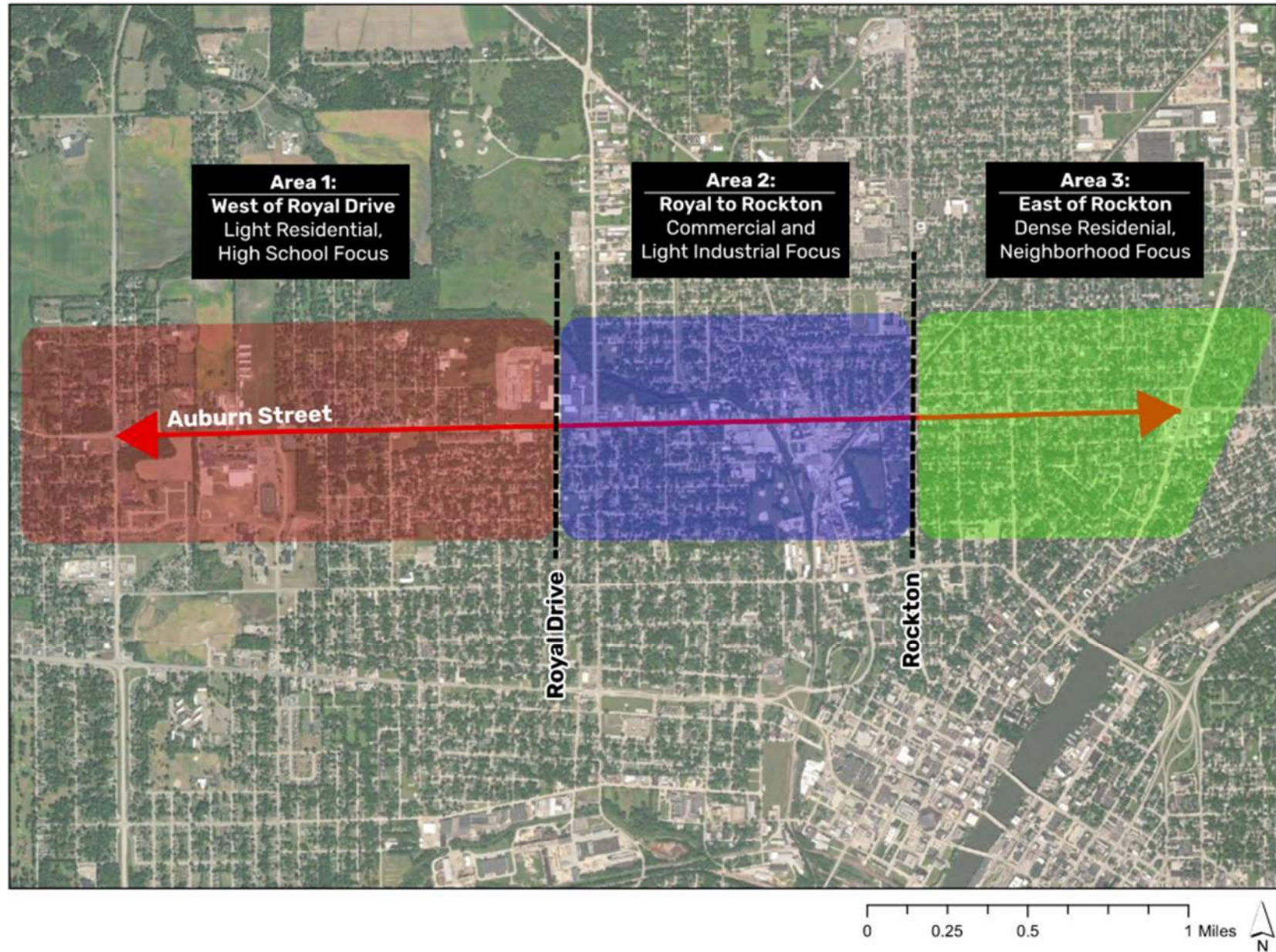


Corridor Segments



Corridor Study Purpose and Goals

- Find ways to keep pedestrians safe
- Develop plans to beautify the corridor
- Keep the community informed
- Focus on how to improve sidewalks, lighting, and other aspects within the right of way which will make Auburn Street an asset to adjacent neighborhoods
- Identify ways to clean up empty industrial buildings
- Determine strategies to update aging infrastructure and improve the roadway
- Estimate the cost of future improvements

How can you help inform the Auburn Street Corridor Study ?

- What are the major assets within the corridor?
- Is there an area of greatest pedestrian use?
- Are there areas of crime along the corridor?
- How is the Mel Anderson bike path used now?
- How is Talcott-Page park used now?
- Is there enough lighting along Auburn Street?
- What would you like to see in the public space?
- Are there locations where pedestrians and vehicles frequently interact?
- Do you ride your bike along Auburn Street? Or in the lanes? Do you feel safe doing so?
- Are there intersections that you avoid from a safety perspective (speed, can't see well, etc.)?
- Where do you want to ride your bike along Auburn Street? Bike lanes/path?



What We've Heard So Far ...

- Add Left Turn Lanes on Auburn St
- Improve Bus Stop Facilities
- Improve Access to Bus Stops
- Repair / Add Sidewalks
- Provide Safe Mobility Options for Bicyclists
- Provide Safer Pedestrian Crossings near Kent Creek and Auburn High School



Before



After

